



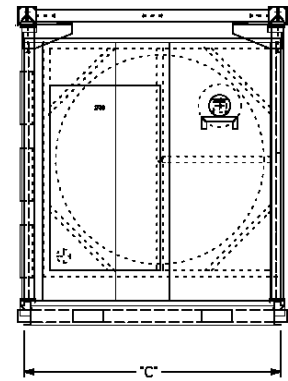
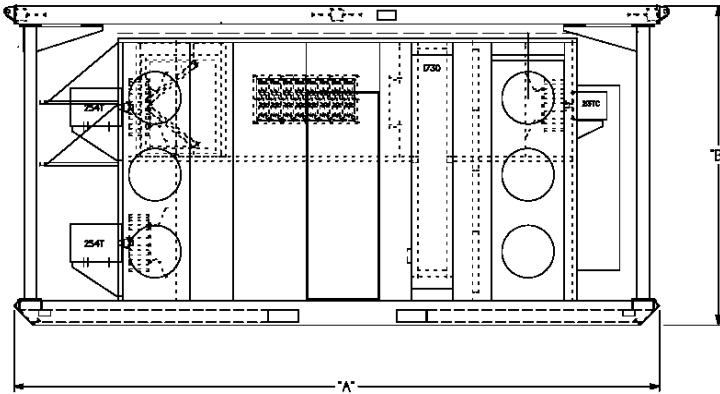
## Controlled Dehumidification

5931 Ford Court Brighton, MI 48116 • 810.229.7900

Fax: 810.229.7908 • sales@ctrdh.com • ctrdh.com

### MS-17500/15000-ARID-Dry Units

<u>Model</u>	<u>CFM</u>	<u>Fuel Type</u>	<u>"A" Dim.</u>	<u>"B" Dim.</u>	<u>"C" Dim.</u>	<u>Weight</u>
CDH-R-168	17,500/15,000*	Gas or Electric	221"	101"	88"	10,650 lbs
CDH-R-168	17,500/15,000*	Dual	221"	101"	88"	10,650 lbs



Max Air Volume	Moisture Removal	Moisture Removal	Moisture Removal	Moisture Removal	Moisture Removal	Moisture Removal
	Lbs/Hr 80°/60% RH	Gallons/Day 80°/60% RH	Lbs/Hr 55°/80% RH	Gallons/Day 55°/80% RH	Lbs/Hr 40°/80% RH	Gallons/Day 40°/80% RH
17,500	442	1,272	368	1,061	252	728

Pipe Size	LP Inlet Pressure	Natural Gas Inlet Pressure	Electric	Electric	Gas	CFH Gas	Gallon/HR
			Reactivation Load 230/1/60	Reactivation FLA Load 460/3/60	Reactivation FLA Load 460/3/60	Max Usage NG	Max Usage LP
1½"	7-14" w.c.	7-14" w.c.	N/A	335	44	1,200	12.7

#### Available Accessories:

- Remote Humidistat
- Cooling Coil Modules
- Heating Coil Modules
- Trailer Mounting with generators
- (3) 18" or 20" Round Connections

